

PROJECT NAME:	TYPE:
DATE:	
SPECIFIER:	
PART NO.:	PREPARED BY:



LED FESTOON TRACK SYSTEM

INSTALLATION INSTRUCTIONS

Cautions:

- Risk of fire or electric shock.
- To prevent wiring damage or abrasion, do not expose wiring to edges of sheet metal or other sharp objects.
- For use in dry locations only.
- For use with Class 2 power source only.

Important Safety Instructions:

- Read all instructions.
- This product must be installed by a person familiar with the construction and operation of the product and the hazards involved, in accordance with local NEC code.
- For use only with LED Festoon type bulb, maximum 1W.
- Do not install this fixture assembly in damp or wet locations.
- Do not install any fixture assembly closer than 6 inches from any curtain, or similar combustible material.
- Do not install this fixture assembly in the location that is exposed to the user directly, when the installation location is lower than 5 feet.
- Disconnect electrical power before adding to or changing the configuration of the rail.
- Do not attempt to energize anything other than lighting rail fixtures on the rail. To reduce the risk of fire and electric shock, do not attempt to connect power tools, extension cords, appliances, and the like to the rail.
- Secondary connections must be clean and tight to avoid arcing and overheating.
- Warranty is void in case of unauthorized modifications and/ or improper use.
- Do not connect a track to more than one branch circuit unless the track is constructed so that it can be used with more than one branch circuit. Check with a qualified electrician. Although the track lighting system may seem to operate acceptably, a dangerous overload of the neutral may occur and result in a risk of fire.

SAVE THESE INSTRUCTIONS AND REFER TO THEM WHEN ADDITIONS TO OR CHANGES IN THE FIXTURE CONFIGURATION ARE MADE

PROJECT NAME:	TYPE:
DATE:	
SPECIFIER:	
PART NO.:	PREPARED BY:



LED FESTOON TRACK SYSTEM

INSTALLATION INSTRUCTIONS (continued)

Technical Specification:

Input Voltage: 12V AC/DC, 24V AC/DC

Lamps: LED Festoon bulbs, Max. 1W/bulb (Sold separately)

Model	Length (m)	Max. number of Festoon bulbs	Max. power consumption (W)
TBD-1	1	19	19
TBD-2	2	40	40
TBD-3	3	61	61
TBD-4	4	82	82
TBD-5	5	100	100

Note: The Festoon tracks can be connected in series. The maximum load should not exceed 100 watts for one connection.

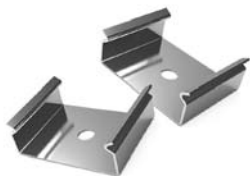
Installation Steps:

IMPORTANT: Install TBD Festoon lamps and connect power to the Festoon Track System prior to snapping fixture into mounting clips.

1. Connect Power

Remove the knockout located on the power supply box and install a Listed connector compatible with the wiring method in use. The supply wire should be stripped back 1/4", fully inserted into the terminal block and then the screw contacts tightened firmly. Replace the top of the power supply box.

2. Screw mount the mounting clips on the surface of the applied area at least every 12" along the length of the Festoon Track fixture.



3. Snap the fixture into the mounting clips

Field Cutting:

The Festoon Track length can easily be altered on site simply by cutting the unit to size. When the fixture units are field cut, it is essential to strip the bus bars 1/4" back and connect the power box at the end.