

PROJECT NAME:	DATE:	TYPE:
SPECIFIER:	PREPARED BY:	
PART NO.:		



PROFILE CHANNEL SERIES

TBD.E12W

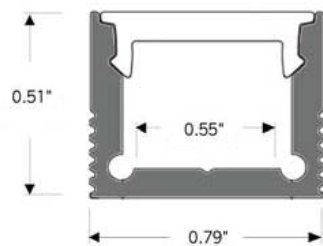
FLANGELESS PROFILE CHANNEL



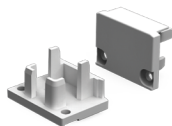
A flangeless channel with a flat lens. Suitable for applications requiring a flat lens, cabinetry, shelves, wine room bins. Can be recessed or surface mounted. This durable Anodized Aluminum Profile Channel not only adds a great finished appearance to your application; but also protects LED chips from dust; provides superior thermal management for higher wattage LED strips; and prolongs the overall lifetime of the lighting system. Patented diffusers maximize lumen output and beam distribution.

FEATURES

- Flangeless – for Surface or Recessed Mount
- 160° Beam Spread
- Indoor / Outdoor
- Silver Anodized Finish
- Custom Finishes Available (Powder Coat)
- 2 Endcaps and Mounting Clips Included
- Frosted Lens Included
- Lengths 49.25" or 98.5"
- Field Cuttable, or Custom Cut Lengths Available
- Optional Adjustable Brackets (Sold Separately)



ACCESSORIES



TBD.E12W-EC
End Caps
(2 Included)



TBD.E12W-BKT-ADJ
Adjustable Bracket
(Sold Separately)



TBD.E12W-MC
Mounting Clips
(2 Included)

ORDERING GUIDE

TBD.E12W	—	—
	LENGTH	LENS
	49 - 49.25" 98 - 98.5"	F - Frosted