

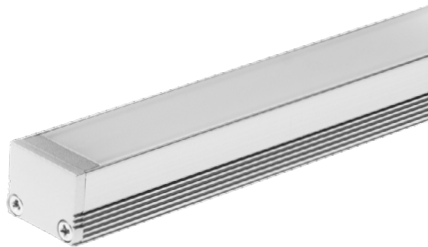
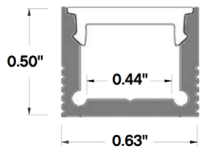
PROJECT NAME:	DATE:	TYPE:
SPECIFIER:	PREPARED BY:	
PART NO.:		



# PROFILE CHANNEL SERIES

## TBD.E12

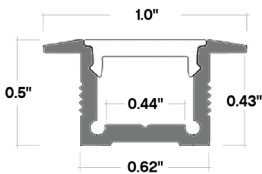
### FLANGED OR FLANGELESS PROFILE CHANNEL



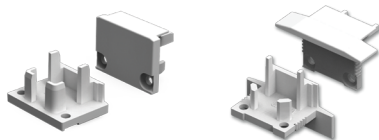
A slim channel available in either flanged or flangeless profile. This durable Anodized Aluminum Profile Channel not only adds a great finished appearance to your space, but also protects LED chips from dust, and provides superior thermal management for higher wattage LED strips, prolonging the overall lifetime of the lighting system. Patented diffusers maximize lumen output and beam distribution.

### FEATURES

- Surface or Recessed Mount
- 160° Beam Spread
- Mounting Clips included
- 2 end caps included with every 49" profile
- Custom cut lengths available
- Finish: Anodized Silver or Black (Surface Only)



## ACCESSORIES



**TBD.E12-EC**  
End Caps  
(2 Included)



**TBD.E12-MC**  
Mounting Clips  
(Included)

## ORDERING GUIDE

**TBD.E12**

**MOUNT**  
R - Flanged  
S - Flangeless

**LENGTH**  
49 - 49.25"  
98 - 98.5"

**FINISH**  
AS - Anodized Silver  
BK - Black

**LENS**  
F - Frosted  
Blank - No Lens