

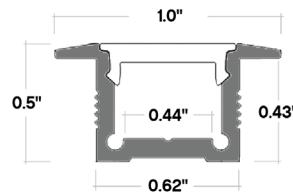
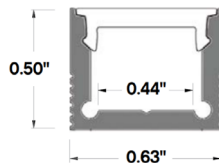
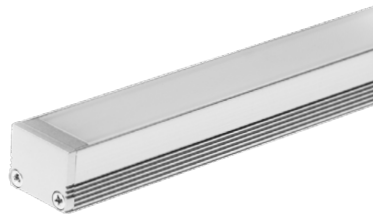
PROJECT NAME:	DATE:	TYPE:
SPECIFIER:	PREPARED BY:	
PART NO.:		



# LED CLOSET LIGHT SERIES

## TBD.CL12

### LED CUSTOM CLOSET STORAGE LIGHT



This selection of the LED Closet Light Series is custom designed for use in residential and commercial closets, including closet storage areas with clothing. Suitable for undercabinet, valance, millwork, recessed and surface mount applications. This custom version is offered with a straight channel, and can be sized in 2" increments up to 98". Available in either standard 3.0W, or high output 4.4W. Fully dimmable.

### FEATURES

- 24V DC
- 3.0W Standard or 4.4W High Output Per Ft.
- 36 LED's Per Ft.
- 240 Lm/Ft Standard or 355 Lm/Ft High Output
- 90 or 95 CRI
- Linked up to 24' Standard, or 30' High Output
- Custom Lengths - 2" Increments - up to 98"
- Requires Remote TLS Power Supply:
  - Dimmable and Non-Dimmable options available
- Certifications: UL Listed and NEC / Approved for closet and closet storage areas
- Long Life 50,000 Hours
- Eco-friendly, No IR, No UV, will not degrade fabric or artwork
- Frosted lens eliminates LED dots
- Versatile mounting clips allow for angled installation
- Snap-on inline motion sensor for easy installation (optional)
- Door Jam Switch (optional)

### OUTPUT OPTIONS

STRIP	WATTS	LEDS/FT	LUMENS/FT	RATING
STANDARD	3.0	36	240	INDOOR
HIGH OUTPUT	4.4	36	355	INDOOR

**Certification** - NRTL Listed. Suitable for installation in storage areas with clothing in accordance with NEC Article 410.2 & 410.16 and CEC section 30-204 in clothes closet. Must be assembled as a fixture at manufacturer facility to be compliant.



### ORDERING GUIDE

**TBD.CL12**

#### LENGTH

**CC** - Custom  
Lengths available in 2" increments from 6" to 98"

#### MOUNTING

**R** - Flanged  
**S** - Flangeless

#### FINISH

**SI** - Silver  
**BK** - Black

#### LENS

**F** - Frosted

#### POWER FEED

**EF** - End Feed  
**BF** - Bottom Feed  
**L** - Left Side Feed  
**R** - Right Side Feed

#### CONNECTORS

**H** - 60" Hardwire  
**HH** - 60" Hardwire at each end  
**HD** - 60" Hardwire one end + DC connector on male end  
**D** - DC Connector (female end)  
**DD** - DC connector at each end (female + male end)

### OUTPUT OPTIONS

#### OUTPUT

**S** - Standard 3.0W  
**HO** - High Output 4.4W

#### TEMP / COLOR

**30K** - 3000K  
**40K** - 4000K

#### CRI

**90** - 90 CRI  
**95** - 95 CRI

PROJECT NAME:	DATE:	TYPE:
SPECIFIER:	PREPARED BY:	
PART NO.:		



# LED CLOSET LIGHT SERIES

## TBD.CL12

### LED CUSTOM CLOSET STORAGE LIGHT

## ACCESSORIES

### TBD.CL12 ACCESSORIES



Link Ext. Cable  
**TBD.CL-LNKDC-40**  
**TBD.CL-LNKDC-120**  
**TBD.CL-LNKDC-144**  
**TBD.CL-LNKDC-240**



Hardwire Cable  
**TBD.CL-HWDC-8**  
**TBD.CL-HWDC-24**  
**TBD.CL-HWDC-60**  
**TBD.CL-HWDC-120**



**TBD.SWITCH200**  
 Door Jam Switch (Optional)



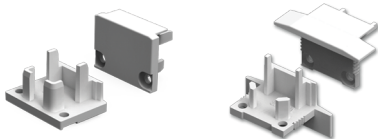
**TBD.IN-LINE/SWITCH**  
 Inline Switch



**TBD.IN-LINE/DIM**  
 Inline Dimmer

\*Compatible with any TBD  
 hardwire or plug-in drivers,  
 12V or 24V

Maximum Load:  
 12V - 24 Watts  
 24V - 48 Watts



**TBD.E12-EC**  
 End Caps  
 (2 Included)



**TBD.E12-MC**  
 Mounting Clips  
 (Sold Separately)